



PRECISION GPS+

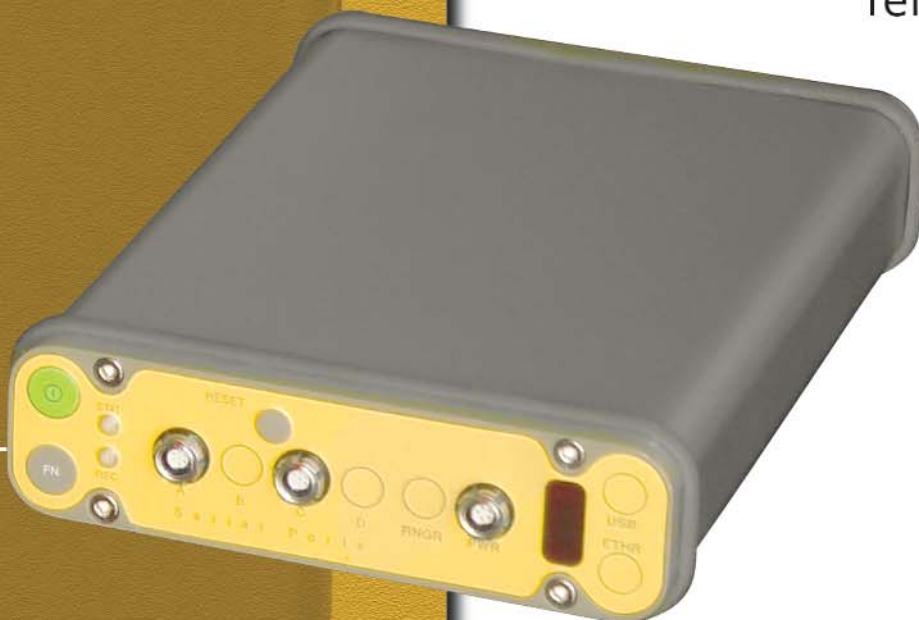
TOPCON®



TopNET

Reference Station Software Suite

Topcon's innovative GPS
reference station software



ISO 9001:2000
FM 68448



TopNET

As the demands of modern satellite positioning continue to expand, Topcon is dedicated to meeting these new challenges. A key component of the modern GPS industry is the fixed reference station, and Topcon is proud to offer a new, innovative solution to meet this growing need; our new TopNET Reference Station Software Suite.

Topcon's concept is to provide a suite of TopNET products that offer a wide range of functionality that is also scalable from a single site to networks covering a large geographical area. TopNET can be configured to offer complete control over a single CORS site or a network of CORS sites with additional options to provide GPS+ RTK correction data generated using information from all Reference Stations to model and reduce errors, thereby improving precision and productivity.

Key features of The TopNET Reference Station Software Suite:

- Supports GPS and GLONASS operation as well as GPS only
- Scalable solution in both functionality and geographic coverage area
- Easily upgraded to operate from one to hundreds of Reference Stations
- Reference Stations easily added to expand Network and geographic coverage area
- Functionality ranging from Continuously Operating Reference Stations (CORS) to Virtual Reference Station (VRS) easily added
- Communications to Reference Stations via Internet, modem, USB or serial connection
- Configuration of Reference Stations including remote firmware uploads
- Configuration of Site Parameters and options for data logging
- Automatic push to FTP site(s) of raw and/or RINEX GPS and GLONASS data files
- Monitoring of satellite and site parameters
- Automated message sending on alarm via e-mail



A company or agency offering GPS+ reference station services to their own employees or the surrounding community demand system flexibility without sacrificing security. With TopNET you can log, archive, and post raw data files, convert to RINEX, and upload native raw files and RINEX files to an ftp site, all under the security and control of a designated System Manager.

The System Manager has full rights to control remote receivers, and can give full rights or subset of the controls to users in the field. The System Manager has full control over all aspects of the receiver and data logging.

A fully operational GNSS network system goes beyond just the software component. At Topcon, we are dedicated to offering a complete system configuration, along with the technical support staff to assure that your system is setup, configured, and operates properly. When considering a GNSS network system solution, make sure you get a complete package including software, hardware, and technical support and installation assistance.



GPS+ Receiver Technology

Topcon offers the widest selection of GPS+ receivers in the industry, including one receiver designed specifically with operation in a CORS system in mind, the Odyssey-RS. This receiver incorporates Topcon's advanced dual-constellation GPS+GLONASS tracking capability for improved performance and accuracy. With the addition of the GLONASS satellites to the existing NAVSTAR US satellites, the Topcon GPS+ system provides full 24 hour coverage where GPS only systems suffer from down time. With additional satellites overhead, operation in areas with numerous obstructions is also improved. Finally, the additional satellites offer a positive contribution to satellite geometry or DOP, and provide improved precision over GPS only systems.

Contact your local Topcon distributor today for a demonstration of this exciting new system from Topcon. The intuitive software design combined with the added benefits of GPS+ signal tracking makes the Topcon TopNET+ system a clear choice.

Innovation, not imitation. It's a way of life for Topcon. Continuing to bring you the most advanced positioning technology available.

Superior Technology. Superior Design. Superior Performance and Productivity.

Only from Topcon. The world leader in precision positioning technology.



7400 National Dr. • Livermore, CA • 94551 • USA
Phone: (925) 245-8300 • Fax: (925) 245-8599

www.topcon.com

Specifications subject to change without notice. Patents Pending

©2005 Topcon Corporation All rights reserved. P/N: 7010-0676-GNSS
Rev. A Printed in U.S.A. 9/05



Odyssey-RS
Powerful, fully featured
GPS+ RTK reference
station receiver

